

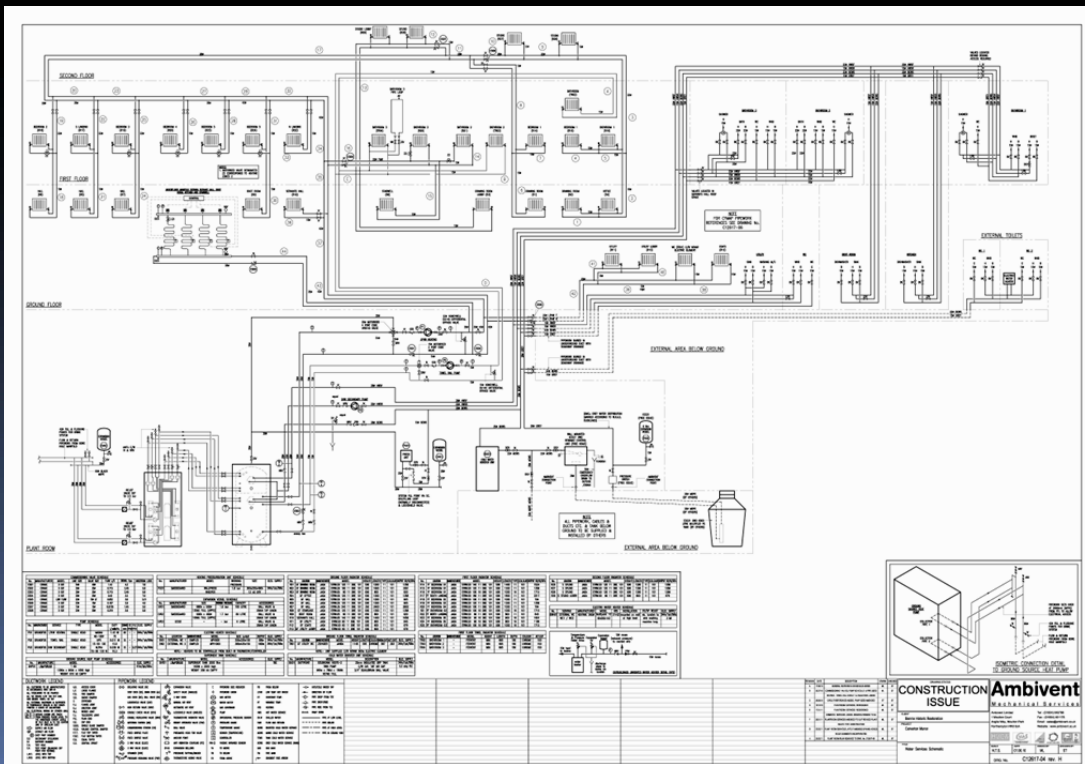
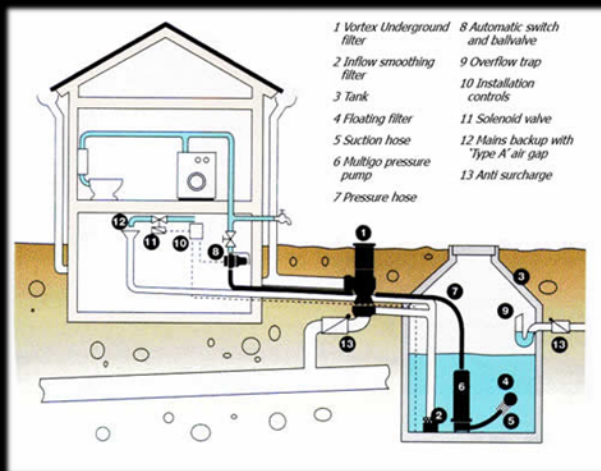
Calverton Manor - Milton Keynes



Sympathetic restoration of a 16th Century Manor House near Milton Keynes incorporates GSHP renewable technology heating plant utilising a thermal Store to deliver hot water service and LPHW heating to a combination of underfloor heating and new Jaga Strada DBE low temperature radiators.

The thermal store works on a layered temperature basis using 'superheat' refrigerant technology from the GSHP to provide simultaneous low temperature 45°C water for heating and DHWS at 60°C without supplementary heat input.

Rainwater Harvesting is also utilised for toilet flushing purposes.



CONSTRUCTION ISSUE

Ambient

MAKES LEGAL SENSE

DATE: 10/10/10

BY: [Signature]